

# IMAN HABIBI

## *Radiant Light*

For Large Ensemble with  
Open Instrumentation (2019)

Premiere: July 13, 2019

Westben Center, Campbellford, ON

Duration: c. 6-9 minutes

## Programme Notes

*Radiant Light* is inspired by a short poem I encountered at De Young Museum in San Francisco, and the painting that accompanied it. Named *Untitled*, the poem was placed under Childe Hassam's painting, *Easter Morning (Portrait at a New York Window)*. It was written by a local seventh-grader named Elizabeth Woods. The poem focuses primarily on the light, the radiant light, as it breaks into the dark New York City apartment, and gives this painting its wonderful array of colours. The painting and the accompanying poem by someone of the next generation felt symbolic. Knowing that we are leaving behind a dark wasteland of a world for the future generation, I felt so uplifted by the idea that there may still be a small window, through which, we can at least let in some hope of light for future generations.



## Instrumentation

For an ensemble of 6-15 instruments with or without a conductor

## Performance Notes

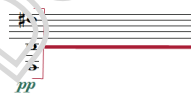
The piece may be performed spatially (with musicians spread around a reverberant space) or from a concert stage. The musicians may use stopwatches to follow time, or a conductor may cue entrances. There are no parts to this piece. All musicians perform from the score. The overall effect is one of smoothly blended sonorities shifting slowly from one to other, with no clear cuts in between. In other words, the sound of each sonority may leak into the next, unless a clear break is indicated in the score. No one instrument is meant to be prominent, rather, each instrument makes a small contribution to the colour of each sonority. Beyond anything else, it is important to listen, respond to other musicians, and contribute to the whole.

## Performance Instructions

- Accidentals apply only to the notes they precede.
- The numbers 1-5 above each sonority are meant to assist a conductor (if a conductor is present) in cuing each sonority by indicating its number with their hand.
- Timings may vary depending on the acoustics. The musicians can decide to augment or diminish any passage. The indicated timings in the score are only a suggestion.
- Do not transpose the notes in any of the sonorities, unless it is necessary. If there are no notes present within the range of your instrument, you can choose to simply not play.
- This piece does not have a specified tempo marking. The musicians are encouraged to play the gestures freely, at a speed they deem appropriate in relation to the rest of the ensemble.
- Proceed from one sonority to the next at the specified times. The timings do not need to be accurate.
- At least within each sonority, it is best to dedicate yourself to either the low, medium, or high range.
- You can use any number of the gestures shown on the second page of the score to perform each numbered sonority. For each sonority, commit to one gesture, as it would suit your instrument and the piece best. Once you move to the next sonority, you may use a different gesture, as it would best suit your instrument and the piece.
- Incessant repetition of a gesture is discouraged. Repeat only if you feel it is necessary.
- A vertical bracket such as the one below indicates a simultaneous tutti attack of the written notes, before you can proceed to playing one of the gestures:



- Long horizontal lines (such as the one shown below in red) emphasize the importance of sustaining the sonority they follow for at least the length of the line. The sustain can be achieved through repetition of a gesture, so long as the dynamic markings indicated in the score are respected.



# Radiant Light

Iman Habibi

1 0" 3 15" 4 30" 5 45"

*ffp* *fp* *mfp* *p*

*ffp* *fp* *mfp* *pp*

*pp* *p*

Detailed description: This system contains the first five measures of the piece. It is written for piano in 4/4 time with a key signature of one sharp (F#). Measure 1 (0") features a fortissimo piano (*ffp*) chord in both hands. Measure 2 (12") has a fortissimo piano (*fp*) chord in the right hand and a piano (*pp*) chord in the left hand. Measure 3 (15") features a fortissimo piano (*fp*) chord in both hands. Measure 4 (30") features a mezzo-fortissimo piano (*mfp*) chord in both hands. Measure 5 (45") features a piano (*p*) chord in both hands.

1 1' 3 1'25" 4 1'45" 5 1'55"

*mfp* *mfp*

*p*

Detailed description: This system contains measures 6 through 10. Measure 6 (1') features a mezzo-fortissimo piano (*mfp*) chord in both hands. Measure 7 (1'25") features a mezzo-fortissimo piano (*mfp*) chord in both hands. Measure 8 (1'45") features a mezzo-fortissimo piano (*mfp*) chord in both hands. Measure 9 (1'55") features a piano (*p*) chord in both hands. Measure 10 (1'55") features a piano (*p*) chord in both hands.

Approximately 6-7" per chord. Gradually get faster →

1 2' 2 3 4 5 1 2 3 4

*p* *mf*

*mf*

Detailed description: This system contains measures 11 through 18. Measure 11 (2') features a piano (*p*) chord in both hands. Measure 12 features a piano (*p*) chord in both hands. Measure 13 features a piano (*p*) chord in both hands. Measure 14 features a mezzo-fortissimo piano (*mf*) chord in both hands. Measure 15 features a mezzo-fortissimo piano (*mf*) chord in both hands. Measure 16 features a mezzo-fortissimo piano (*mf*) chord in both hands. Measure 17 features a mezzo-fortissimo piano (*mf*) chord in both hands. Measure 18 features a mezzo-fortissimo piano (*mf*) chord in both hands.

Radiant Light

Continue with the same pattern, slowly getting faster →

Musical score for the first system. The treble clef staff contains six chords, each marked with a circled number: 1, 2, 3, 1, 2, 3. The first chord is marked with a forte *f* dynamic. The bass clef staff contains a single sustained chord marked with a forte *f* dynamic. The system concludes with a fortissimo *ff* dynamic marking.

Musical score for the second system. The treble clef staff features a long note marked with a circled number 5 and a duration of approximately 3'45" (c. 3'45"). The bass clef staff features a long note marked with a circled number 4 and a duration of approximately 3'30" (c. 3'30"). Both notes are marked with a piano *p* dynamic. The system concludes with a circled number 1 and a piano *p* dynamic marking.

Musical score for the third system. The treble clef staff contains five chords, each marked with a circled number: 2, 3, 4, 5, 1. The first chord is marked with a piano *p* dynamic, and the final chord is marked with a pianissimo *ppp* dynamic. The bass clef staff contains a single sustained chord marked with a piano *p* dynamic. The system concludes with a pianissimo *ppp* dynamic marking.

